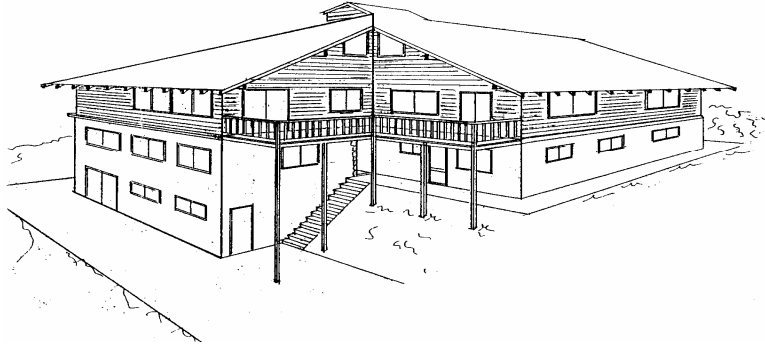


Tivoli Ski Club^{inc.}

www.tivoliskiclub.org.au



Registration No. A11535T

Guest Info Pack (updated 2009)

History of Tivoli

The Tivoli Ski club was established in 1966 when a group of people, mostly from German and Austrian backgrounds, came together with a common love for skiing. Over the next two years the club building at Falls Creek was erected using money and time donated by the founding 26 members.

The original structure consisted of 25 beds spread across 7 rooms, a dinning room, games room, drying room and amenities. Since that time the club has expanded and now has 29 beds over 10 rooms, a games room, ski room and lounge room.

Objective

From the very start the club has had one objective as stated in the club rules:

“To promote the interest and participation in all forms of sporting activities, including skiing, skiing competitions, bush walking and fishing”

To achieve this it was agreed that the club should be a non-profit organisation and provide facilities at the lowest possible price. This objective continues to be applied today.

Transport to Tivoli

Tivoli Ski Club is situated at Falls Creek, 375km from Melbourne with easy access via the Hume Freeway. Outside Glenrowan signs direct the ski traffic to the “Ski fields”. Follow these signs, and then as you enter Myrtleford, follow the signs to Falls Creek. The journey takes about five hours, the last 32km being mountain road.

At the base of the mountain is the small town of Mount Beauty. This is also the last place to buy chains, petrol and antifreeze. It is also possible to park here and take a bus up, rather than drive up the mountain.

If driving up the mountain, please note:

1. Chains **must** be carried on the mountain during the snow season regardless of conditions
2. Police are present on the mountain and all road rules apply within the village

Car entry to Falls Creek is charged in winter just before entering the resort. Check Falls Creek Resort Management web site regarding current entrance fees. (www.fallscreek.com.au)

Coach Service

Falls Creek Coach Service (www.fallscreekcoachservice.com.au) run a service between Melbourne and Falls Creek on a regular basis. They also run a shuttle service from Mt. Beauty.

An alternative method is to take a train to Albury and from there catch a bus to Falls Creek.

Falls Creek Traffic

During winter, the roads throughout the village are closed to traffic. This makes it possible to ski from the front door of the lodge to the lifts and back home again in the afternoon. However, there is no direct access to the lodge in winter by car.

Oversnow Transport

On arrival at the resort in your car, you will be directed to the Oversnow Terminal. This is where you will be transported by oversnow vehicle to the lodge. Having dropped off your passengers and luggage at the terminal, you then need to drop your car at the car park – follow directions from staff at Falls Creek. A shuttle bus will take you back to the Oversnow Terminal enabling you to be reunited with your family!

When taking the Oversnow, you just need to advise the staff that you are staying at Tivoli Ski Lodge on Parallel street. The journey should only take a few minutes, and you will be dropped at the door of the lodge. Please note, this journey can take a lot longer during peak times of guest arrival – be prepared if you are coming in on a Friday evening or weekend for some delay.

Please note that there is a 10% discount if you pre-book the oversnow ticket. See their website for details. (www.oversnow.com.au)

Finally, please note that it is possible to walk from the car park to the lodge and avoid the cost of oversnow transport. The more snow there is on the ground, the harder this becomes. Not recommended for families or those with lots of supplies!

Tivoli Ski Club Facilities

The club offers a selection of rooms with various combinations of beds. Pillows and blankets are provided but you must bring your own pillowcases and sheets.

All rooms have a hand basin, mirror, writing table, cupboard and drawers.

Men's and Ladies toilets and showers are located on the ground floor. The ground floor also holds a Laundry with washing and drying machine. You must bring your own toiletries and washing powder. The ground floor hallway also provides access to the Games room, Drying room and a public telephone.

A ski / snowboard store can be found in the basement. Bikes can be secured in here during summer months. We ask that all outside footwear be restricted to non-carpeted areas.

The first floor holds a Dining room, Lounge room and fully equipped kitchen that includes electric stoves, fridges, freezer, microwave oven, and utensils. Each room has allocated cupboard space in the kitchen. You supply the food. The dining room is also equipped with a music system so feel free to bring along your favourite CDs or MP3s.

The spacious Lounge is equipped with a television, DVD, video recorder and a selection of comfortable lounge chairs and sofas. Just the place to be after a hard day on the mountain.

Please note, there is no Internet connection at the time of writing, but there are a couple of internet cafes and there is also good Telstra 3G service in the village.

There is good mobile coverage for most networks. There is also a payphone which receives incoming calls. The number is 03 5758 3235.

There will be a caretaker at the lodge year round if you have any enquiries. Please note, the caretaker is there only to keep the public areas clean. The cleanliness of your room is your own responsibility. When leaving the lodge we ask that you make sure your room is vacuumed and tidy and that the washbasin and mirror are clean.

The lodge is locked using a door code. This will be communicated by the booking officer. Call Karen on 0448 558 808 if there are any issues.

The Resort

The village at Falls Creek can accommodate approx. 4000 people. It has two supermarkets, a post office, chemist, ski shops, numerous bars, discos and restaurants. Everything is available on the mountain at slightly inflated prices. During winter everything is open seven days a week, the summer season sees many establishments either closed or open limited hours.

The resort is serviced by Rocky Valley dam, a water catchment area at the top of the mountain. The bulk of its water goes to produce hydro electricity at three stations placed down the mountain.

The size of the dam allows the pursuit of many summer water sports such as wind surfing, water skiing, parasailing, canoeing, etc. Some of these can be hired on the mountain.

Fishing for trout in the dam, pondage areas or nearby streams is a popular sport. A fishing licence is required.

Walking to the nearby mountain huts for a picnic is also a pleasant and interesting way to spend the day.

The area is also great for mountain biking, with the resort committed to supporting an ever growing network of trails.

For more information call the Falls Creek Information Centre on (03) 5758 3490 or go online to www.fallscreek.com.au

Kit List

Essentials on top of normal overnight gear:

- Door lock code (From booking officer)
- Sheet/s (Room 2 Queen - Room 3,6,7 Dble others Single)
- Pillow case/s (Two pillows per bed)
- Doona / Sleeping bag (Or bring two sheets and use blankets provided)
- Towels
- Music
- DVDs
- Food and drink (However, supermarket / bottle shop open all year)
- Sunscreen (Easy to burn in snow)
- Washing Powder
- Sun Glasses (Snow glare can irritate eyes)

Summer

- Hat / Cap
- Insect Repellent
- Fishing rod and License

- Hiking shoes
- Mountain Bike

Winter

- Water proof or Ski clothing
- Water resistant or Ski gloves
- Warm clothing
- Woollen hat / Balaclava
- Snow boots / Gum boots
- Car Chains (Must be carried in winter)
- Small shovel (To dig out car if necessary)